

89 NORTH  
**LDI** & CRESTOPTICS  
**CICERO**

**EFFORTLESS INTEGRATED CONFOCAL SYSTEM PACKAGES**

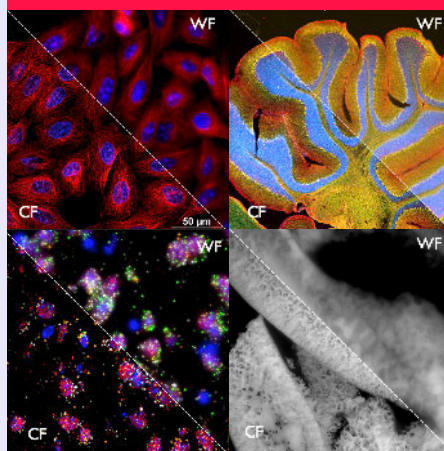
The suite of four 89 North CICERO Spinning Disk Confocal Packages is meticulously crafted for effortless integration into diverse imaging setups, promptly transforming them into reliable and user-friendly confocal systems.

Select from the array of available LDI laser lines, and you'll find all the essential components required to establish a comprehensive spinning confocal imaging system that seamlessly interfaces with your camera and microscope.



**KEY FEATURES**

- Compact spinning disk confocal unit
- Manual bypass mode (widefield)
- Single disk with 50um pinholes
- 5-position emission filter wheel
- LDI - Laser Diode Illuminator
- Matching Chroma filter set
- Optical fibers & connectors
- Fiber bend box
- Installation tools
- C-mount adapters to microscope and camera
- Field lens (matched to microscope)



**KEY APPLICATIONS**

Life sciences, metrology, and material sciences are among the disciplines that increasingly rely on high-speed, high-contrast, high-resolution imaging. Almost all research benefits from 3D confocal images on a daily basis.

- High Content Screening
- Digital Pathology
- Spatial Biology
- Material Science

**FOUND IN THE WORLD'S MOST ADVANCED LABORATORIES**

Our customer base includes some of the most respected institutions in imaging and research.



# 89 NORTH LDI & CRESTOPTICS CICERO INTEGRATED CONFOCAL SYSTEM PACKAGES

## SPECIFICATIONS

| Packages                         | CICERO-3LDI-s1   | CICERO-4LDI-s1  | CICERO-5LDI-s1  | CICERO-5LDI-s2  |
|----------------------------------|--|---|---|---|
| <b>89 North Lasers (nm)</b>      | 405/470/640  | 405/470/555/640   | 405/470/555/640/730   | 405/488/555/640/730   |
| <b>Excitation &amp; Dichroic</b> | Triple bandpass excitation & dichroic set  | Quad bandpass excitation & dichroic set   | Penta bandpass excitation & dichroic set  | Penta bandpass excitation & dichroic set  |
| <b>Chroma Filters</b>            | 1 triple bandpass & 3 single band emission filters.<br>Single bands: ET440/40m, ET510/50m, ET700/75m   | 1 quad bandpass & 4 single band emission filters.<br>Single bands: ET440/40m, ET510/50m, ET600/50m, ET700/75m | 1 penta bandpass & 5 single band emission filters.<br>Single bands: ET440/40m, ET510/50m, ET600/50m, ET700/75m, ET811/80m | 1 penta bandpass & 5 single band emission filters.<br>Single bands: ET440/40m, ET525/50m, ET600/50m, ET700/75m, ET811/80m |
| <b>FOV</b>                       | Up to 22mm   |   |   |   |
| <b>Bypass Mode</b>               | Yes (manual)   |   |   |   |
| <b>Spectral Range</b>            | Excitation: 390-750nm ; Emission: 430-850nm  |   |   |   |
| <b>Camera</b>                    | C-mount camera   |   |   |   |
| <b>Resolution</b>                | Lateral Resolution (FWHM): ~230nm (100x NA 1.45)<br>Axial Resolution (FWHM): ~600nm (100x NA 1.45)<br>Temporal: 100 fps, full frame (camera limited) |   |   |   |
| <b>Software</b>                  | µManager, VisiView®, Volocity, CellSens, SDK available for integration, TTL control and serial conversion available                                  |   |   |   |
| <b>Configuration</b>             | Inverted or Upright Microscope   |   |   |   |

## CONTACT US

Should you have specific requirements or preferences, feel free to reach out to our team of specialists or territory managers. We are more than willing to tailor a custom system that aligns perfectly with your unique research needs.

Email: [info@89north.com](mailto:info@89north.com)

Phone: **+1.802.881.0302**



Version 4.0 02/2024